



DSD Hardware

DSD MULTIPOINT DOOR LOCK JIG SET UP • 2011



WWW.THEDSGROUP.COM

Tomorrow's Innovative Solutions for Today's Doors & Windows

The DS Group of Companies: DraftSeal, KrisTrack, Eclipse Architectural & DSD Hardware

CONTENTS

1. Aluminum jig for 1 ¾' door slab deep mortise and lever set (1 pc)
2. Aluminum jig for door jamb RH & LH for adjustable strikers (1 pc)
3. Aluminum jamb jig inserts for adjustable center and adjustable hook strikers (2 pc)
4. Dewalt router motor (1 pc)
5. Dewalt D handle base with euro-groove guides (1 pc)
6. Dewalt plunge router base for deep mortise and striker routing (1 pc)
7. Eurogroove bit (1 pc)
8. Deep mortise bit (1 pc)

ADDITIONAL TOOLING REQUIRED BUT NOT SUPPLIED

1. Hand drill
2. ½" drill bit
3. Three quick grip clamps

JIGS & ROUTER BITS

PRODUCT NUMBER	DESCRIPTION
DSMPDOORJIG1	Door & jamb jig with router & bases
DSRBITFP1	Router bit for Eurogroove in door
DSRBITL2	Router bit for gear boxes & striker plates

If you have any inquiries, please contact us at 1-888-520-9009 or info@theDSgroup.com

PRIOR TO FIRST USE THE FOLLOWING SET UP MUST BE REVIEWED:

1) EURO-GROOVE BASE: The euro-groove router base has been pre-set to work correctly with 1- $\frac{3}{4}$ " slabs. However, variation in slab thickness may cause undesired results. The base can be adjusted to accommodate variations between 1.690" and 1.770".

The euro-groove base must be snug on the door but not tight as to cause any marking of the slab or difficulty in operation.

Check the fit and if necessary adjust euro-groove router base to door thickness. This can be achieved by loosening the four screws, (see picture below), that hold the side supports in place thus increasing or decreasing the gap between the side plates.

Re-tighten screws and the base is now set up and ready for use.



2) DEEP MORTISE AND LEVER SET JIG: The deep mortise and lever set jig has been preset to work correctly with 1 $\frac{3}{4}$ " slabs. However, variation in slab thickness may cause the jig to be overly tight on the slab. The jig can be adjusted to accommodate variations between 1.690" and 1.770".

The jig must be snug on the door but not tight as to cause any undesired marking of the slab. Check the fit and if necessary adjust the jig. This can be achieved by loosening all the screws on both sides of the jig, (see picture below), that hold the side supports in place. Once loosened open up the jig and place it on the slab.

Clamp the side supports to the slab and re-tighten all the screws being careful that the jig remains centered on the slab. The jig is now set up and ready for use.

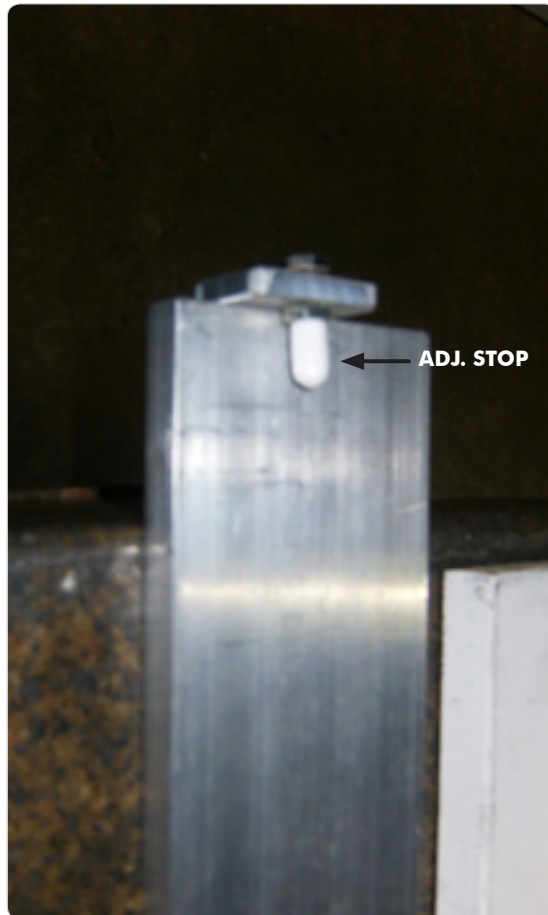
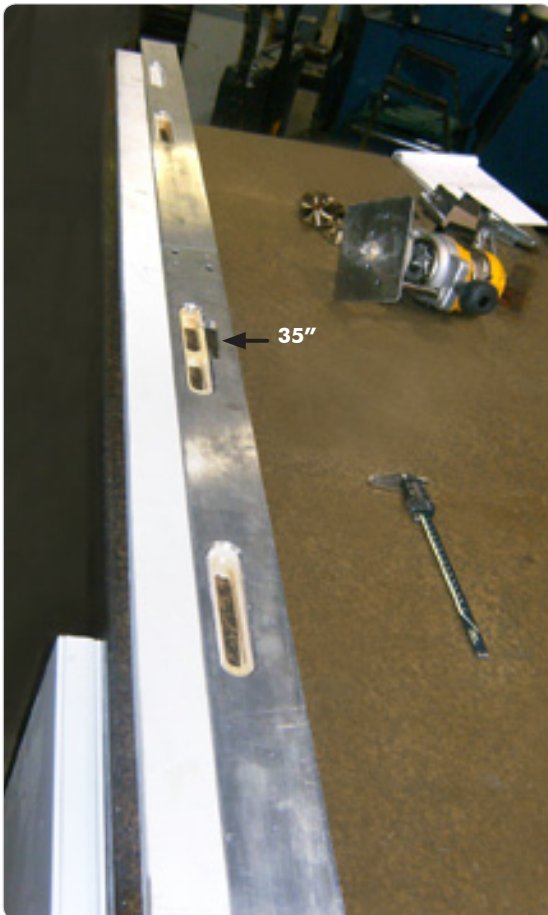


NOTES:

- A. If adjustment to either the euro groove router base or the door slab jig is necessary, care must be taken to make adjustment from both sides of fixture and or jig to ensure euro groove and deep mortise cuts are lined up and centered in the door edge.
- B. The plunge router base has a connection for a vacuum system to be attached to it. We recommend setting this up as it will assist with visibility and help prevent sawdust from getting between the router base collar and jig when making cuts. If you choose not to attach a vacuum to it, then we strongly recommend that between plunges the door slab, jig and router base collar be blown free of sawdust.

3) JAMB JIG: The jamb jig has 1 ½" of adjustment and will accommodate sill heights from 1" to 2 ½". The jamb jig will need to be adjusted to factor in the sill height and gap between the bottom of the door and top of the sill. This can be achieved with the adjustable stop at the bottom of the jig.

Add your sill height to the distance between the bottom of your slab and top of your sill; this will give you your offset. Take this measurement and add 35" to it giving you the total set up measurement. Now noting the 35" mark etched on the jig measure down to the stop and make any necessary adjustment so the distance between the 35" mark on the jig and the stop equals your set up measurement. The jamb jig is now ready to use.



Your jigs are now ready to use.

STEP 1 • DOOR SLAB PREP: EUROGROOVE CUTTING

1. Install adjustment ring onto motor.
2. Install motor into Eurogroove router base by aligning pins on the base with slot on the motor. Lock into place with clamp on the base.



3. Install euro-groove bit into motor and adjust to ½" cut.
4. Plug router base cord into motor and base cord into wall outlet. Turn motor switch to on position. Router can now be operated with trigger switch on base.
5. With door slab secured on edge and lock side facing up, route the euro groove into the slab from one end to the other.
6. Stop motor and switch to off position. Remove saw dust from Eurogroove.

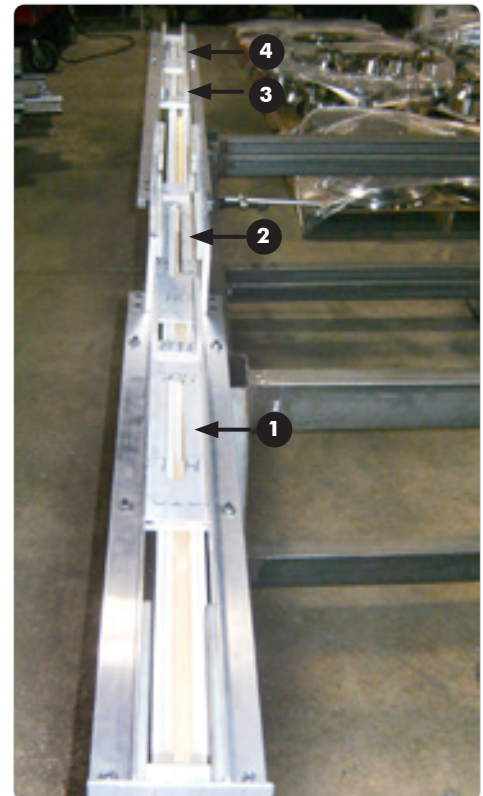
STEP 2 • DOOR SLAB PREP: DEEP MORTISE POCKETS

1. Take motor out of eurogroove base and take adjustment ring off.
2. Install deep mortise bit fully into motor and tighten.
3. Install motor into plunge router base by aligning the flat side of the motor to dust collector tube on base. Lock into place.



4. Place jig onto door slab edge making sure the bottom stop on jig is snug against bottom of the slab.

5. Note that the jig has 4 slot sections where deep mortising is required by the lock cases on the hardware. 3 cuts for 3 hook locks and 4 cuts for 4 hook locks. Clamp jig to door slab to prevent movement of jig.



6. Starting at door bottom end, turn router motor on, position router into jig by aligning brass collar into slot in the jig and plunge router down. Push router along the slot until the brass collar comes up against the stop.

NOTE: material removal should be done in a minimum of five passes with each successive pass plunging further. The stop system on the router can be utilized to assist with plunge depths. **CAUTION: Do not exceed 1/2" plunge (depth) per pass; excessive plunging can flex the bit and break collar.**

7. Complete **Step 6** for each lock case. Three cuts for a 6'8" lock and four cuts for an 8' lock.



STEP 3 • DOOR SLAB PREP: LEVER SET

CYLINDER SLOT

1. Leave deep mortise jig in place on door edge and plunge base on router as set up for lock case prep.
2. Note the side jig has a slot similar to the deep mortise where the router's travel is limited providing the complete necessary cut.
3. Turn router on and angle the router into the side jig ensuring the brass collar is seated in the cylinder slot. Plunge through door skin and halfway through door slab. Maneuver router around the jig until the cylinder cut out is complete.
4. Go to other side of door and complete **Step 3** again, ensuring clean hole through the door.

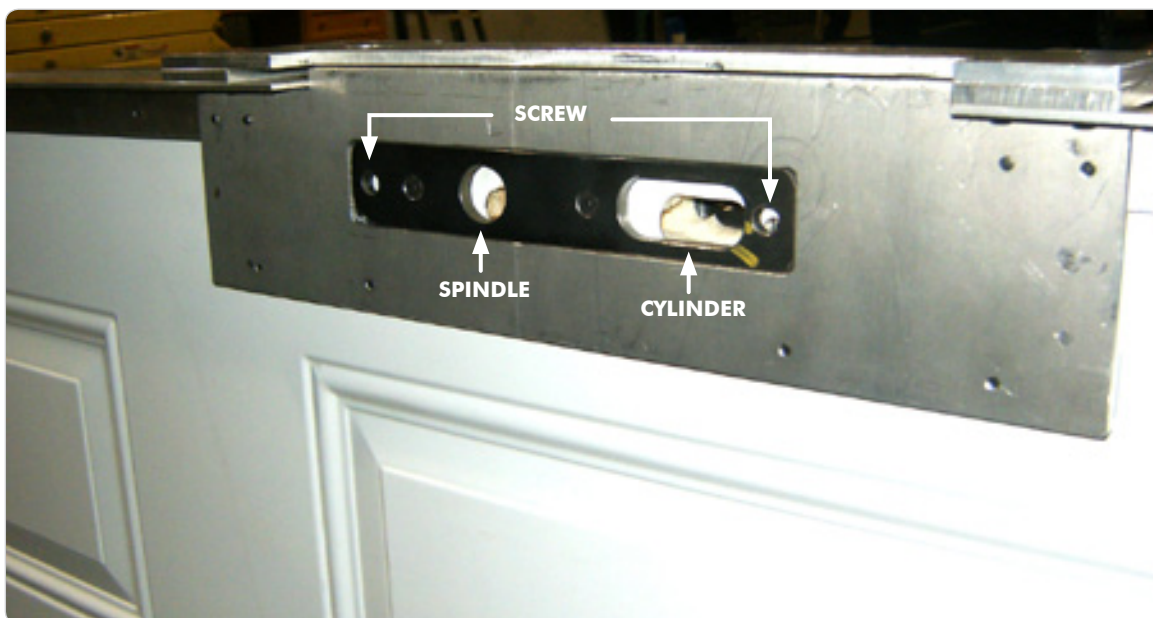


LEVER SPINDLE HOLE

5. Repeat **Steps 3 and 4** for the lever spindle hole.

TRIM SET SCREW HOLES

6. Use electric drill with 1/2" bit to drill two screw holes through door skin and halfway through door slab.
7. Go to the other side of door and repeat **Step 6**.
8. Remove jig and clean out deep mortise and lever set cuts with a vacuum.



Door slab is now ready to have lock and lever set installed in it.

STEP 4 • DOOR JAMB: ADJUSTABLE STRIKER PREP

STRIKER FACE PLATES

1. After determining the correct jamb that the strikers will be installed into, position the jamb jig stop on the correct side of the jig and lay the jig onto the jamb ensuring the bottom of the jamb is up against the stop. Use three clamps to keep the jig in place.
2. The jamb processing requires a 2mm plunge for the faceplate and a deeper plunge through the jamb to accommodate the hook and latch boxes on the strikers.

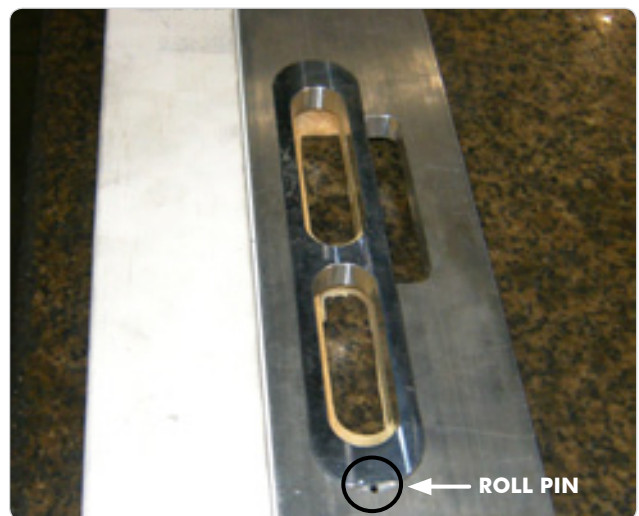


3. Route the jamb by using the plunge router as set up for the previous deep mortise steps. Start with the bottom hook slot. Align the bases brass collar into the jig and plunge the bit 2 mm into the jamb. The stops on the plunge base can be utilized to prevent over plunging into the jamb. Remove all of the material so the striker's faceplate will sit flush with the jamb.
4. Repeat **Step 2** for the centre striker and top hook(s) as necessary. Totalling three or four cuts as determined by door size.

- Put in place the aluminum hook strikers insert into the jig to cut the deep mortise for the striker boxes. Starting with the bottom hook striker place the router into position ensuring the brass collar is aligned correctly and plunge the bit through the jamb. Maneuver the router around the insert ensuring a clean cut all the way through. (Note while setting up for production you may want to use wooden blocks under the jamb and jig to prevent cutting into the table top). Repeat this step for the other 1 or 2 hook strikers.



- Using the same procedure as the hook strikers install in the jig the centre striker insert. Note the roll pin in the jig that will ensure the insert will only fit in one way to get the correct position of the cut. Again ensure the brass collar is aligned correctly with the jig and plunge the bit through the jamb. Repeat this for both deep mortise cuts required by the centre striker.
- Remove clamps and jig and clean out cuts with vacuum.



The strikers are now ready to be installed into the jamb.

TOP 6 COOL CUSTOM FEATURES OF THE MK2 DSD MULTIPOINT DOOR LOCKS

- » 3 and 4 hook models
- » Adjustable Stainless Steel strikers
- » 45mm back set centre cases
- » Single and double door locks
- » 6'8" (2032mm) and 8' (2438mm) product models
- » Easy modification for custom door heights
- » Compliant to DP100 hurricane testing (Dade County)
- » Compatible with North American key-way and Euro-cylinder applications
- » Complementary range of Lever Lock Sets in a choice of finishes
- » 10 year mechanical breakdown guarantee on all MK2 Multipoint products
- » 10 year surface finish guarantee on all PVD finish/Brass Lever Lock Sets



1 HIGH SECURITY HOOKS
Ensuring even distribution of weatherproofing and strength



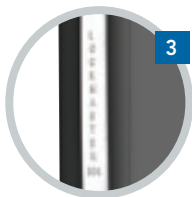
4 OPPOSING CENTRE HOOK
Optimizes anti-separation security



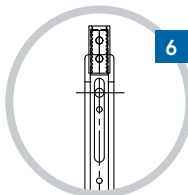
2 QUICK CHANGE REVERSIBLE LATCH
Fast and simple handing for Lockmaster



5 ANTI-SLAM MECHANISM
Prevents accidental operation of the lock when open



3 GRADE 304 STAINLESS STEEL FACEPLATE
Delivering high levels of corrosion resistance, as standard



6 SHOOTBOLT EXTENSIONS
Delivering enhanced performance



This photo portrays a short sample lock made for promotional purposes only.

C3 LEVER LOCK SETS

FERRARO SERIES

C3 FERRARO-1 / LEVER LOCK SET (316SS-BRUSHED) AVAILABLE SOON. C3 FERRARO-2 / LEVER LOCK SETS - 4 FINISHES AVAILABLE NOW
FERRARO BACK PLATE 30MM ACTIVE OR INACTIVE SETS



WHITE POWDER COAT
DSPF1341-03W (ACTIVE)
DSPF1342-03W (INACTIVE)



SATIN ALUMINUM
DSPF1341-87SC (ACTIVE)
DSPF1342-87SC (INACTIVE)



BLACK POWDER COAT
DSPF1341-06BL (ACTIVE)
DSPF1342-06BL (INACTIVE)



BRONZE POWDER COAT
DSPF1341-79BR (ACTIVE)
DSPF1342-79BR (INACTIVE)

FLORENCE SERIES (Scrolled)

BACK PLATE 44MM ACTIVE OR INACTIVE SETS



BRASS
DSPF1111-32 (ACTIVE)
DSPF1112-32 (INACTIVE)

SATIN NICKLE
DSPF1111-78 (ACTIVE)
DSPF1112-78 (INACTIVE)



ANTIQU BRASS
DSPF1111-80 (ACTIVE)
DSPF1112-80 (INACTIVE)



ANTIQU NICKLE
DSPF1111-88 (ACTIVE)
DSPF1112-88 (INACTIVE)

BRONZE POWDER COAT
DSPF1111-79 (ACTIVE)
DSPF1112-79 (INACTIVE)

FAENZA SERIES (Swept)

BACK PLATE 30MM ACTIVE OR INACTIVE SETS



SATIN NICKLE
DSPF1221-78 (ACTIVE)
DSPF1222-78 (INACTIVE)

BRASS
DSPF1111-32 (ACTIVE)
DSPF1112-32 (INACTIVE)

BRONZE POWDER COAT
DSPF1221-79 (ACTIVE)
DSPF1222-79 (INACTIVE)



ANTIQU BRASS
DSPF1221-80 (ACTIVE)
DSPF1222-80 (INACTIVE)



ANTIQU NICKLE
DSPF1221-88 (ACTIVE)
DSPF1222-88 (INACTIVE)

DSGroup

Tomorrow's Innovative Solutions for Today's Doors & Windows

The DS Group of Companies: DraftSeal, KrisTrack, Eclipse Architectural & DSD Hardware

HEAD OFFICE & MANUFACTURING CENTRE - VANCOUVER, CANADA

7470 Buller Avenue, Burnaby, B.C. V5J 4S5 Canada

Phone: (604) 451-1080 • Fax: (604) 451-1140 • www.theDSgroup.com • info@theDSgroup.com

Outside Vancouver, B.C., please use our toll free numbers: Phone: 1-888-520-9009 Fax: 1-800-567-2887

BRANCH OFFICE & MANUFACTURING CENTRE - TORONTO, CANADA

1545 Britannia Road East, Unit 25, Mississauga, Ontario L4W 3C6 Canada • Local Fax: (905) 696-9623

BRANCH OFFICE & DISTRIBUTION CENTRE - LOS ANGELES, CALIFORNIA

7250 Bandini Blvd, Unit 107, Commerce, CA 90040 USA • Local Fax: (323) 246-4760

SATELLITE OFFICES

Oregon & Hawaii, USA

The DS Group is the brand image of A.K. Draft Seal Ltd.